

5 October 2017

Allan Piercy  
 Products Manager  
 Agrorum New Zealand Limited  
 455 State Highway 1  
 R.D. 5, Ashburton 7775  
 Canterbury, New Zealand

Phone: 03 3779026  
 Email: [enquiries@plantdiagnosticslimited.co.nz](mailto:enquiries@plantdiagnosticslimited.co.nz)  
 Web: [www.plantdiagnosticslimited.co.nz](http://www.plantdiagnosticslimited.co.nz)

Email [allan@agraforum.co.nz](mailto:allan@agraforum.co.nz)

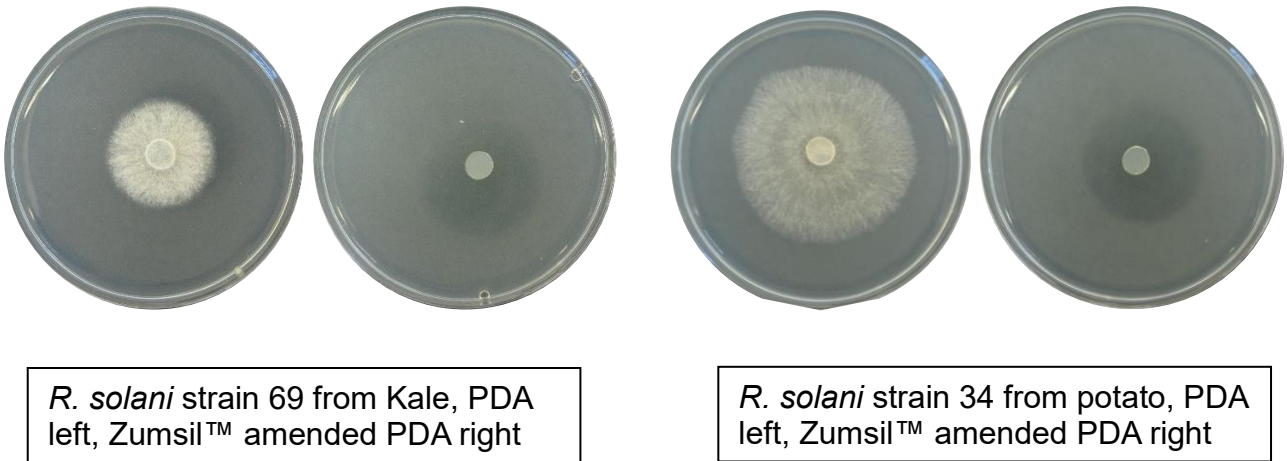
**Re: Agar Plate Testing of Zumsil™ Against Strains of *Rhizoctonia solani***

An amended potato dextrose agar (PDA) plate test was conducted to evaluate the effect of Zumsil™ (diluted to 1:100) on radial mycelial growth of seven *Rhizoctonia solani* strains sourced from a variety of economically important host plants including kale, ryegrass and potato. The Zumsil™ was added to the PDA when molten (53°C) prior to pouring the plates. Colonies of each *R. solani* strain were previously grown on malt agar for 3 days and an 8 mm core added to either a non-amended PDA plate or a Zumsil™ amended PDA plate. Plates were incubated at 20°C for 48 hours and diameters were measured at 24 and 48 hours. Each treatment was replicated three times. Results are presented in Table 1 and photographs are presented in Figure 1.

**Table 1. Effect of the product Zumsil™ compared to the non-amended control, on mycelial growth of *Rhizoctonia solani* strains when added to PDA at the rate of 1:100.**

Isolates	Source Host	AG Group		Mean Colony Diameter 24 hours (mm)	Mean Colony Diameter 48 hours (mm)
PDF69	Kale	AG2.1	PDA	11	24
			PDA + Zumsil	0	0
PDF67	Ryegrass	Unknown	PDA	23	46
			PDA + Zumsil	0	0
PDF64	Lucerne	Unknown	PDA	14	32
			PDA + Zumsil	0	0
PDF57	Cineraria	Unknown	PDA	29	61
			PDA + Zumsil	1.5	3.7
PDF34	Potato	Unknown	PDA	23	47
			PDA + Zumsil	0	0
PDF31	Soil under ryegrass	AG3	PDA	21	55
			PDA + Zumsil	2	3
PDF14	Pea	AG2.1	PDA	22	48
			PDA + Zumsil	0	0

Compared to the non-amended PDA, the Zumsil™ amended PDA either completely or near to completely suppressed the growth of all *R. solani* strains.



**Figure 1. Effect of Zumsil™ added to PDA on radial growth of two *R. solani* strains.**

If you have any further questions regarding these findings then please don't hesitate to contact us.

Yours sincerely

Mark Braithwaite (Plant Pathologist)

DISCLAIMER: All reasonable efforts have been made to ensure the information contained in this report is correct, and is provided on the basis that PLANT DIAGNOSTICS Limited accepts no liability for any loss or damage resulting from actions or non-action taken on the information provided.

COPYRIGHT: The information and or illustrations in this report are the property of the client and any other person(s) wishing to use this information must do so only with the approval of PLANT DIAGNOSTICS Limited.